

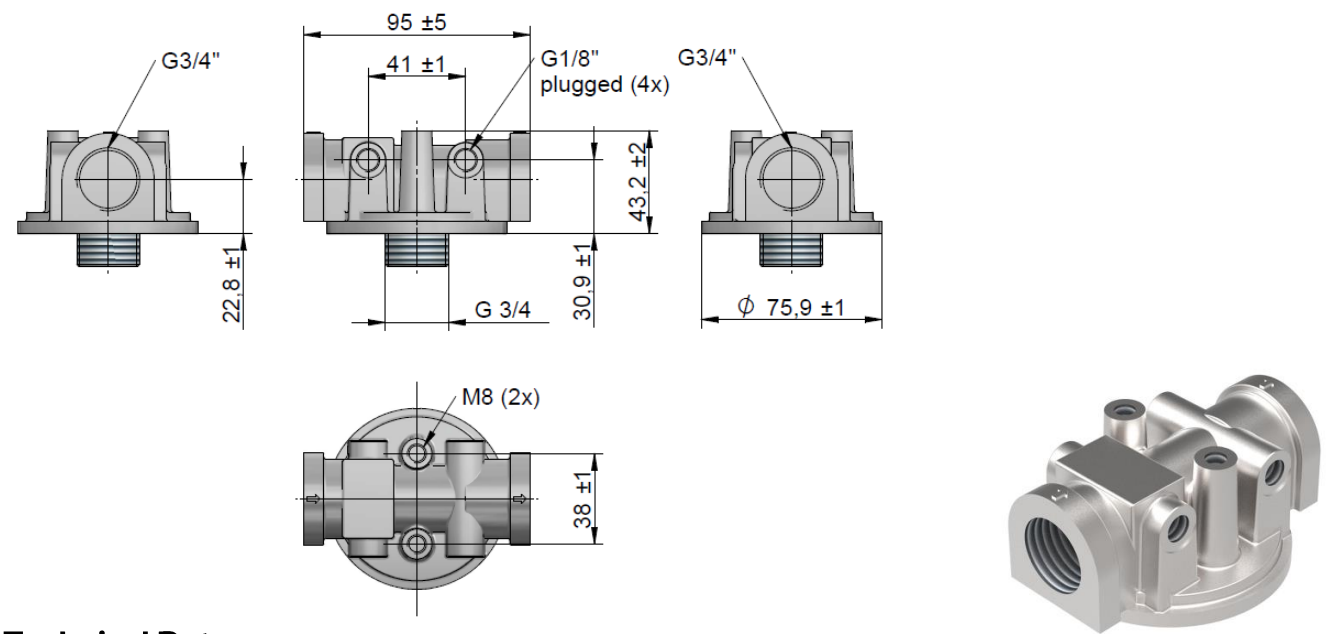
Fluid Controls/Filter

Spin On Filter Head HFFHFL



Our spin on filter program offers a wide range and variety for mobile and stationary filter applications. Choose from different filter ratings with either cellulose or mesh filter media. The spin on filters can be used for usual spare parts in the aftermarket, OEM use with our smart cooler integration (asa rail filter, see page 3) or in combination with our standard filter head, see following pages.

HFFHFL1



Technical Data

order number	description	pressure max.	BP relief pressure	weight
		[bar]	[bar]	[kg]
HFFHFL1K	Spin on filter head, size 1, G 3/4"	12	1,75	0,23
HFFHFL1SK	Spin on filter head, size 1, G 3/4" suction	12	0,35	0,23

Materials

housing	aluminium
sealing bypass	NBR

Temperature

working temperature	-25°C to +100°C
---------------------	-----------------

Pressure

max. working pressure	12 bar
-----------------------	--------

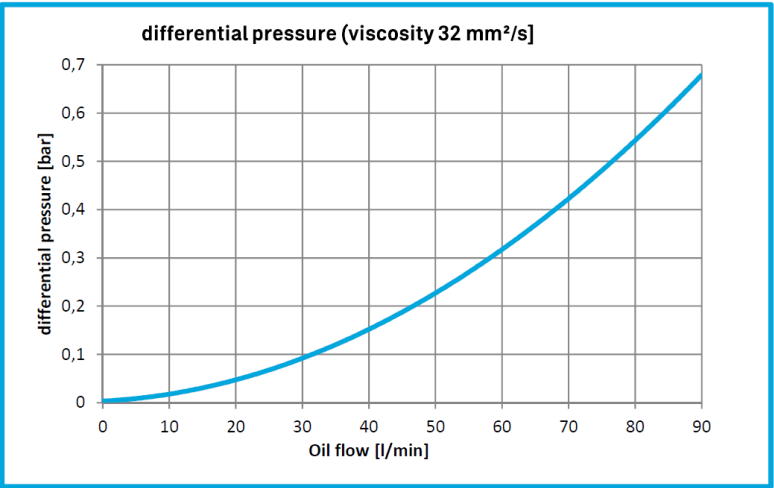
Compatibility

mineral oils

Options

Contact us for any optional visual clogging indicators or suitable pressure switches

Pressure drop of filter head



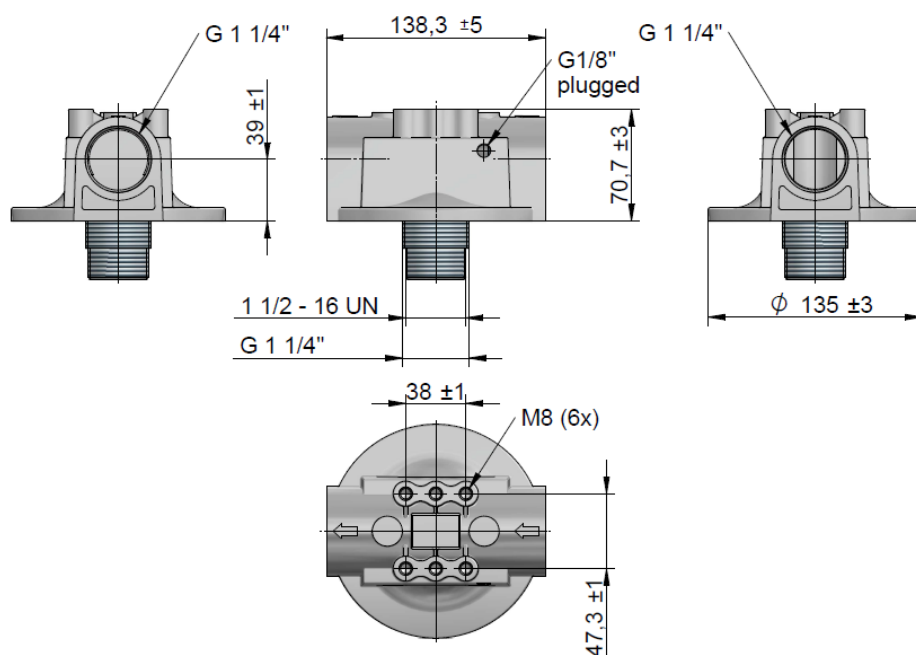
This data sheet and the corresponding scale drawings are to be used as a general guideline and technical overview of our products. Please contact us if more exact information is needed. As we are constantly improving our products, their characteristics, dimensions and weights may also change, although we do our best to incorporate these changes continually, asa assumes no liability for any information therein, any errors, omissions, misprints, nor any direct or indirect damages, losses or costs resulting therefrom. Any cooling performances and general technical values indicated in this catalogue are measured at a test bench according to asa testing procedures or calculated, based on such tests. Due to different conditions in testing and application environments the performance may also vary by +/- 15%. Because there is no standardized testing procedure, tests used by other manufacturers could have different results. Therefore we recommend all products to be checked under the system operating conditions. This is also true for vibrations and mechanical stress as well as for pressure peaks and thermal stress and any other relevant factors. General tolerances according to DIN ISO 2768-vL. General tolerances for casted parts according EN ISO 8062-3 (DCTG 10). Tolerances for rubber parts are according to ISO 3302-1 (class M4-F+C). The tolerances of welding seams are defined by quality group D according to EN ISO 10042, if it is not specified on the actual scale drawing or data sheet. In addition to that we point out that any data sheet and corresponding scale drawing is no substitution for the manual.
DD-HFFHFL-en-rev2

Fluid Controls/Filter

Spin On Filter Head HFFHFL



HFFHFL2



Technical Data

order number	description	pressure max.	BP relief pressure	weight
		[bar]	[bar]	[kg]
HFFHFL2K	Spin on filter head, size 2, G 1 1/4"	12	1,75	0,86
HFFHFL2SK	Spin on filter head, size 2, G 1 1/4" suction	12	0,35	0,86

Materials

housing	aluminium
sealing bypass	NBR

Temperature

working temperature	-25°C to +100°C
---------------------	-----------------

Pressure

max. working pressure	12 bar
-----------------------	--------

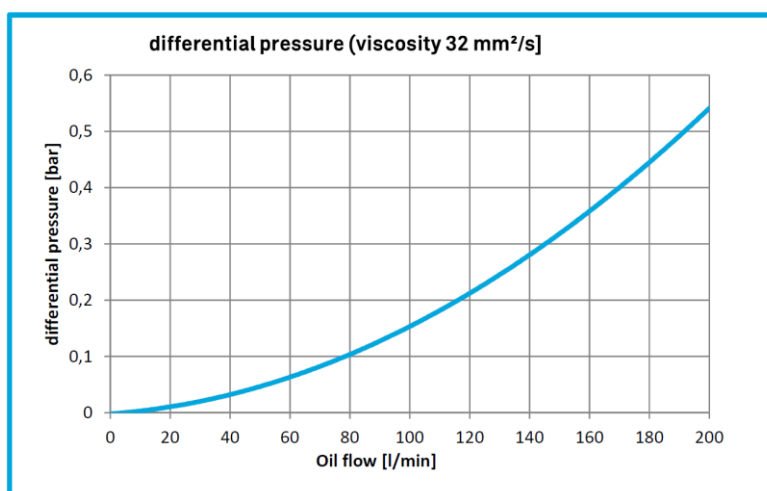
Compatibility

mineral oils

Options

Contact us for any optional visual clogging indicators or suitable pressure switches

Pressure drop of filter head



Fluid Controls/Filter

Spin On Filter Element HFFHFLE



Technical Data

order number*	description	A	B	G	pressure max.	weight
		[mm]	[mm]	BSP	[bar]	[kg]
HFFHFLE11B06WNCDK	Spin filter element 92,6x146 G3/4" 25 µm	92,6	146	¾"	12	0,5
HFFHFLE12B06WNCDK	Spin filter element 92,6x191 G3/4" 25 µm	92,6	191	¾"	12	0,7
HFFHFLE21B10WNCDK	Spin filter element 129x181 G1 ¼" 25 µm	129	181	1 ¼"	12	1,1
HFFHFLE22B10WNCDK	Spin filter element 129x240 G1 ¼" 25 µm	129	240	1 ¼"	12	1,3

*Shown products are 25 µm selection, for further options please look on the following tables.

Materials

filter housing	steel
----------------	-------

Temperature

working temperature	-25°C to +100°C
---------------------	-----------------

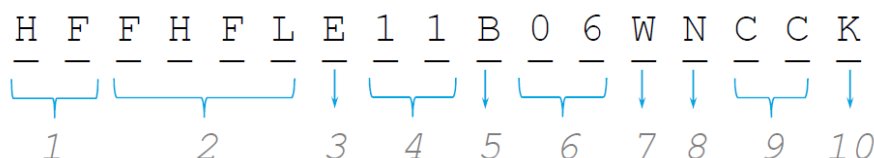
Pressure

max. working pressure	12 bar
-----------------------	--------

Compatibility

Full with fluids: HH-HL-HM-HV-HTG
(according to ISO 6743/4)

Order Number Code/Options



1 Product Series

HF	Hydraulic filters
----	-------------------

2 Design Type

FHFL	Spin on filter
------	----------------

3 Type

E	filter element
---	----------------

4 Filter size x length

11	Ø92,6 x 146 mm
12	Ø92,6 x 191 mm
21	Ø129 x 181 mm
22	Ø129 x 240 mm

5 Port Type

B	BSP
U	UN/UNF

6 Port size of element

06	¾" BSP (only filter size 11&12)
10	1 ¼" BSP (only filter size 21&22)
06	1" - 12 UNF (only filter size 11&12)

7 Bypass valve

W	no bypass
---	-----------

8 Seals

N	NBR
F	FKM

9 Filter media

CC	cellulose 10 µm
CD	cellulose 25 µm
ME	metal wire mesh 60 µm
MF	metal wire mesh 90 µm

10 Options

K	standard kit
---	--------------

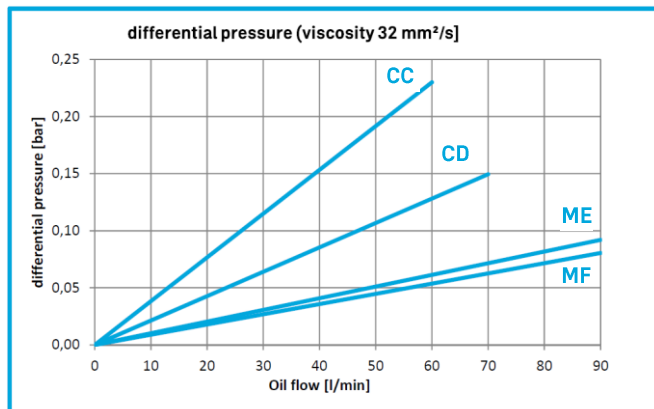
Fluid Controls/Filter

Spin On Filter Element HFFHFLE

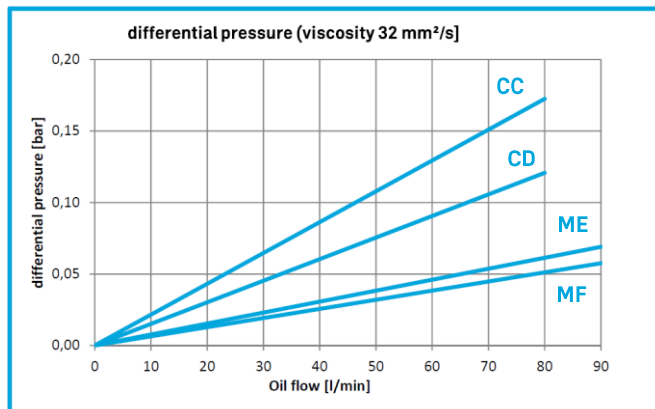


Pressure drop of filter element

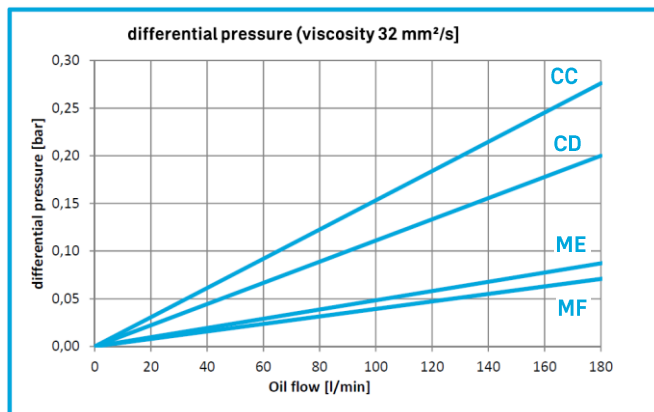
HFFHFLE11....



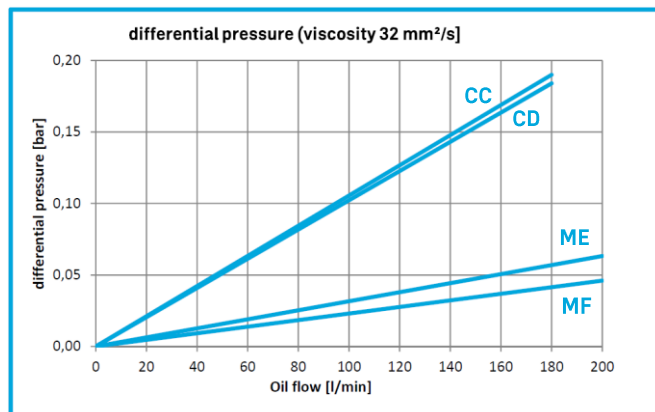
HFFHFLE12.....



HFFHFLE21....



HFFHFLE22.....



Options

Filtration

We offer an optional spin on filter kit to mount on the outlet port in combination with our hydraulic rail connection system, see below.

spin on filter kit	ILLZRF11G2010 (10µm, 60lpm)
BSP ¾"	ILLZRF11G2025 (25µm, 60lpm)
	ILLZRF12G2010 (10µm, 100lpm)
	ILLZRF12G2025 (25µm, 100lpm)
clogging indicator	electric, optical
temperature switches	ILLZTH5069K, ILLZTH4765K
	ILLZTH6065K

Contact us for complete data sheet of this filter integration system.

